

**DCG180-6 | Cummins B6.7-C225 (168-188 kW) EU5 / T4F + ZF 3WG-171 (3+3) | Duplex, clear view, free lift - LH 4000**
**Lifting data**
**DCG180-6**

Lifting capacity, rated (kg)	18000
Lifting speed, unloaded – at 70% of rated load (m/s)	0,40 - 0,35
Lowering speed, unloaded – at rated load (m/s)	0,30 - 0,40

**Driving data**

Travelling speed forward, unloaded – at rated load (km/h)	30 - 27
Travelling speed backward, unloaded – at rated load (km/h)	30 - 27
Gradeability max., unloaded – at rated load (%)	84 - 37
Gradeability at 2 km/h, unloaded – at rated load (%)	60 - 29
Drawbar pull, max. (kN)	137

**Weight of truck**

Service weight (kg)	21600
Axle load front, unloaded – at rated load (kg)	10300 - 37100
Axle load rear, unloaded – at rated load (kg)	11300 - 2500

**Engine**

Manufacturer / model	Cummins / B6,7
Fuel / type of engine	Diesel / 4 stroke
Emission stage / approval	EU Stage V / EPA Tier 4 Final
Number of cylinders / displacement (liter)	6 / 6.7
Power rated @ revs, ISO 3046 (kW@rpm)	168 / 2200 (188 / 1800)
Torque max @ revs, ISO 3046 (Nm@rpm)	1186 / 1300
Alternator, type - power (W)	AC - 1960 (28V x 70A)
Starting battery, voltage - capacity (V – Ah)	2x12 - 145
Fuel consumption, normal driving (l/h)	7 - 9
DEF consumption, normal driving (% of diesel)	4 - 6

**Transmission**

Manufacturer / model	ZF / 3WG-171
Clutch, type	Torque converter
Gearbox, type	Hydrodynamic Powershift
Number of gears, forward - reverse	3 - 3
Driving axle, manufacturer / type	Kessler D81 / Differential and hub reduction

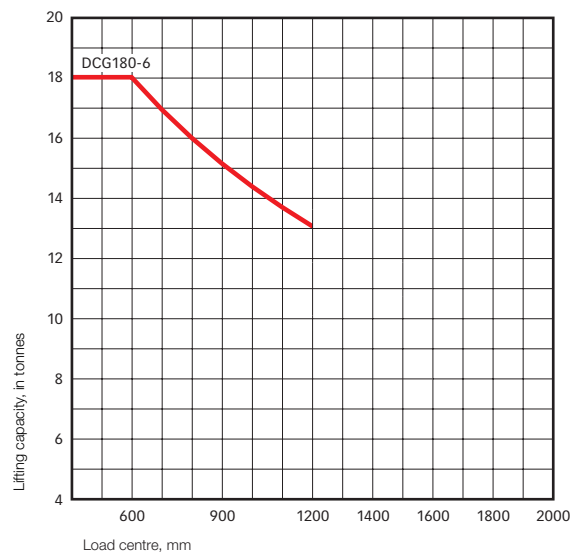
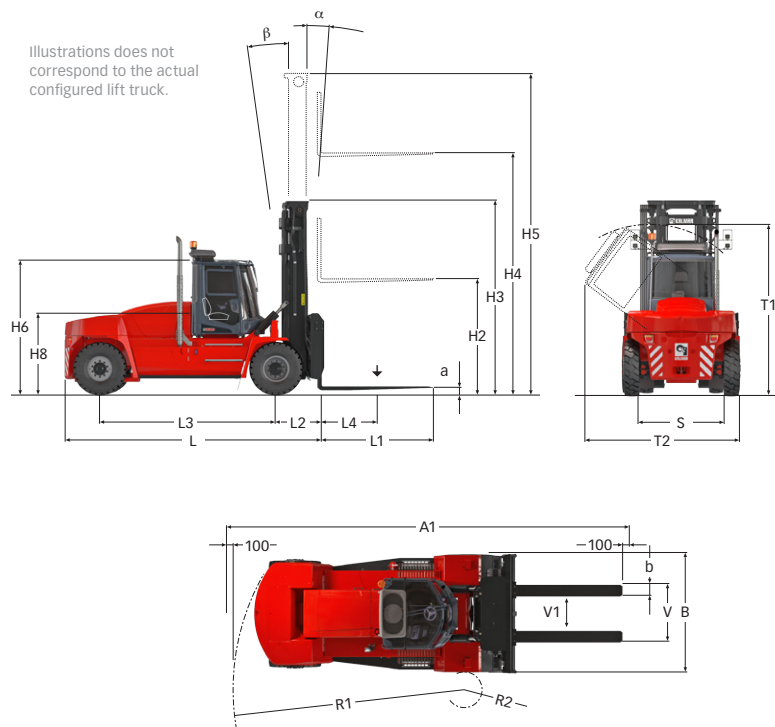
**Wheels**

Type	Pneumatic
Dimension, front – rear (inch)	12.00x20/20PR HD
Number of wheels, front – rear (*driven)	4* - 2
Pressure (MPa)	1,0

**Miscellaneous**

Steering system, type – maneuvering	Hydraulic servo - Steering wheel
Service brake system, type – affected wheels	Oil cooled disc brakes (Wet disc brakes) - Drive wheel
Parking brake system, type – affected wheels	Dry, spring activated disc brakes - Drive wheel
Max. hydraulic pressure (MPa)	19,0
Noise level EN12053 with ECO modes - equivalent inside cabin LpAZ (dB(A))	71
Noise level EN12053 with ECO-modes - equivalent outside cabin LwAZ (dB(A))	109
AdBlue volume (l)	15
Hydraulic oil volume (l)	220

Illustrations does not correspond to the actual configured lift truck.



DCG90-6 to DCG180-6 models:  
Full lifting capacity up to 5000 mm lift height with duplex/duplex  
freelift/triplex masts and integrated sideshift/fork positioning carriage.

## Dimensions

Length of truck (mm)	L	5065
Width of truck (mm)	B	2540
Height of basic machine (mm)	H6	2920
Height of seat (mm)	H8	1770
Distance between centre of front axle – front face of fork arm (mm)	L2	990
Wheelbase (mm)	L3	3250
Load centre (mm)	L4	600
Track (c-c), front – rear (mm)	S	1855 - 1960
Turning radius, outer – inner (mm)	R1-R2	4570 - 270
Ground clearance, min. (mm)		250
Max. height when tilting cab (mm)	T1	3395
Max. width when tilting cab (mm)	T2	3380
Min. aisle for 90° stacking with forks (mm)	H4	6745
Lifting height (mm)	H4	4000
Mast height, min. (mm)	H3	3695
Mast height, max. (mm)	H5	5695
Free lift (mm)	H2	2000
Tilting of mast, forward - backward (°)	$\alpha$ - $\beta$	5 - 10
Fork width (mm)	b	220
Fork thickness (mm)	a	90
Length of forkarm (mm)	l	1200
Width across fork arms, max. - min. (mm)	V	2360 - 640
Sideshift $\pm$ at width of across fork arms (mm)	V1-V	430 - 1500

The design and materials specification are subject to alternation without prior notice.  
Tolerances according to K-standard 95430.0008/0009



Kalmar (Nasdaq Helsinki: KALMAR) is moving goods in critical supply chains around the world, with the vision to be the forerunner in sustainable material handling equipment and services. The company offers a wide range of industry shaping heavy material handling equipment and services to ports and terminals, distribution centres, manufacturing and heavy logistics. Headquartered in Helsinki, Finland, Kalmar operates globally in over 120 countries and employs approximately 5,000 people. In 2023, the company's sales on a carve-out basis totalled approximately EUR 2,0 billion.  
[www.kalmarglobal.com](http://www.kalmarglobal.com)

Kalmar Solutions AB  
Movägen 1  
SE-341 32, Ljungby, Sweden  
tel. +46 372 260 00  
[www.kalmarglobal.com](http://www.kalmarglobal.com)